

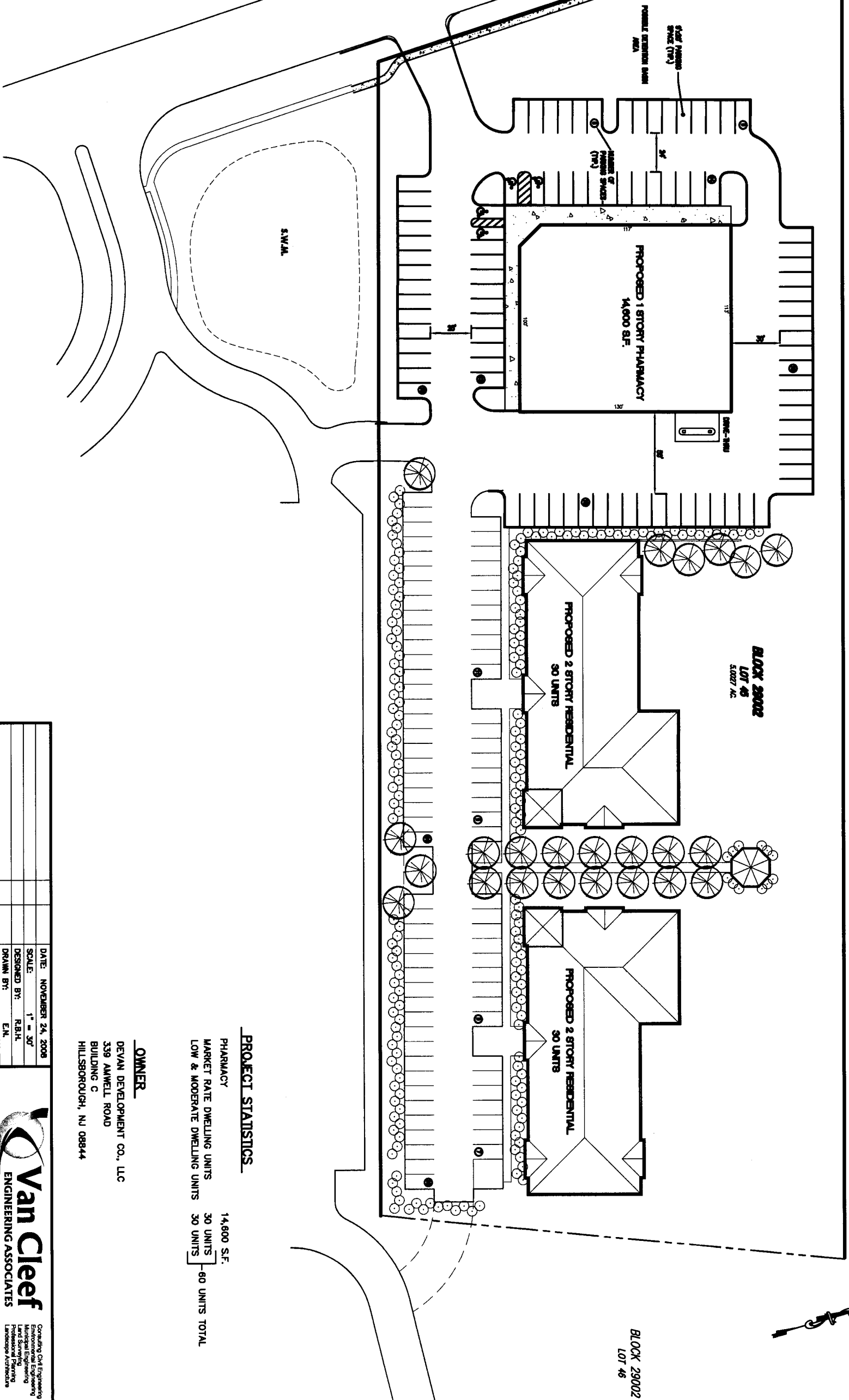
BLOCK 29004
MONTGOMERY KNOLL

BLOCK 29002
LOT 45
5.0227 AC.

BLOCK 29002
LOT 46

BLOCK 28001
LOT 65

U.S. ROUTE 206



PROJECT STATISTICS

PHARMACY 14,800 S.F.
MARKET RATE DWELLING UNITS 30 UNITS
LOW & MODERATE DWELLING UNITS 30 UNITS
60 UNITS TOTAL

OWNER

DEVAN DEVELOPMENT CO., LLC
339 AMWELL ROAD
BUILDING C
HILLSBOROUGH, NJ 08844



Consulting Civil Engineering
Environmental Engineering
Land Surveying
Professional Planning
Landscape Architecture

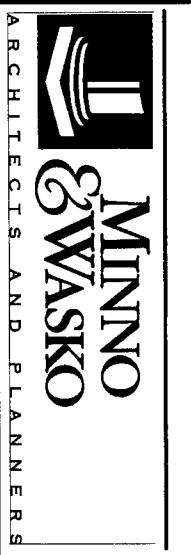
359 LAMMELL ROAD, SUITE 200, HILLSBOROUGH, NJ 08844
PHONE: (908) 388-8881 FAX: (908) 388-8880
EMAIL: VCA@VANCLEEF.COM WWW.VANCLEEF.COM

N.J.L.C. CERT. NO. 34002812000

CONCEPTUAL SITE PLAN

FOR
LOT 45 IN BLOCK 29002
MONTGOMERY TOWNSHIP,
SOMERSET COUNTY, NEW JERSEY

REVISIONS	AUTH.	DATE	JOB No.	DATE	NOVEMBER 24, 2008
DESIGNED BY:	R.B.H.	SCALE:	1" = 30'	NOVEMBER 24, 2008	
DRAWN BY:	E.N.	DESIGNED BY:	R.B.H.		
CHECKED BY:	R.B.H.	DRAWN BY:	E.N.		
		CHECKED BY:	R.B.H.		



ARCHITECTS AND PLANNERS

FLOOR LAYOUT/CONCEPT SITE PLAN/SCALE: 1/8"=1'-0"

FILE NO. 777