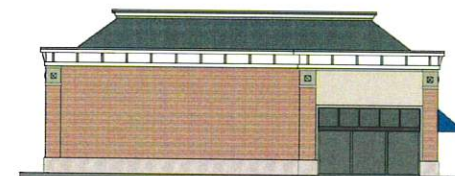




WEST ELEVATION



SOUTH ELEVATION



NORTH ELEVATION

TENANT SIGNAGE

- 1) LED illuminated individual tenant lettering
- 2) Colors & Styles vary
- 3) Maximum 50 sq. ft. primary ID; 35 sq. ft secondary signs
- 4) Maximum 30" (2.5') letter height primary ID; 18" (1.5') secondary signs
- 5) Maximum 5' overall height.
- 6) Maximum 80% horizontal length of bay (column to column)

NOTE: Signs / tenant names shown are not actual tenants. Shown for reference and scale.

